

Cuisinart Outdoors™

Follow us @cuisinart_europe



Cuisinart Outdoors™

7.5" Cleanburn Tabletop Fire Pit

MODEL NO: COH755EU

UK Guarantee

Limited Three-Year Guarantee

This appliance is guaranteed for consumer use for 3 years and is only valid within the United Kingdom.

This guarantee covers consumer use only i.e. defects occurring under normal use within the home from date of purchase or date of delivery, whichever is later.

If the product develops a fault due to defects in materials or manufacture **within 12 months** from the date of purchase, to avoid delays and unnecessary inconvenience, where possible please return the product to the point of purchase for an exchange.

If the product develops a fault due to defects in materials or manufacture **after 12 months** from the date of purchase, and within the guarantee period, Conair UK After Sales Service will repair or replace the product.

Exclusions

This guarantee will no longer be valid meaning that The Conair Group Ltd will not be liable to repair or replace your product where:

1. The appliance has been used on a voltage supply other than that which is marked on the product, or advised within this instruction booklet
2. The appliance has been purchased from an unauthorised stockist*
3. The appliance is used for professional / non domestic usage
4. Repairs or alterations have been attempted by unauthorised persons
5. The failure of the appliance is a direct result of misuse
6. The failure is a result of not following the instructions for use This guarantee does not cover any cosmetic damage due to misuse of the product nor any damage to persons or property that occurs because of product misuse.

*unauthorised stockists include, but are not limited to online auction sites, private sellers and those selling second hand goods, refurbished products etc.

If you have any queries regarding this guarantee please contact the Conair Customer Care at support@cuisinart.co.uk or 03702 406 902.

It is important to retain your proof of purchase.

Even where a refund may be applicable, no refund will be provided without a valid receipt or proof of purchase, we will only be able to offer a repair or replacement service. Please note this does not apply if the product was purchased directly from The Conair Group Ltd.

Guarantees on replacement products run from the original purchase date or date of delivery, whichever is later, and not from the date of replacement.

This guarantee is an additional benefit and does not affect your statutory rights as a consumer.

For further advice on using the appliance or should you need to return your product, please contact the Conair Customer Care at support@cuisinart.co.uk or 03702 406 902.

UK After Sales Service

For further advice on using the appliance or should you need to return your product, swap email and phone around so email is first. Also remove times for phones.

Return address:Customer Care Centre

Conair Logistics
Unit 4, Revolution Park
Buckshaw Avenue
Buckshaw Village
Chorley
PR7 7DW

Please enclose your returns number, name and address details, together with a copy of proof of purchase and details of the fault.

Please note this Instruction Booklet is not the guarantee.

BaByliss SARL

ZI du Val de Calvigny
59141 Iwuy
France

The Conair Group Ltd

Unit 4, Revolution Park
Buckshaw Avenue
PR7 7DW

See our full line of premium Cuisinart™
Outdoor Cooking Products at www.cuisinart.eu

©2025 Cuisinart
Printed in China | COH755EU

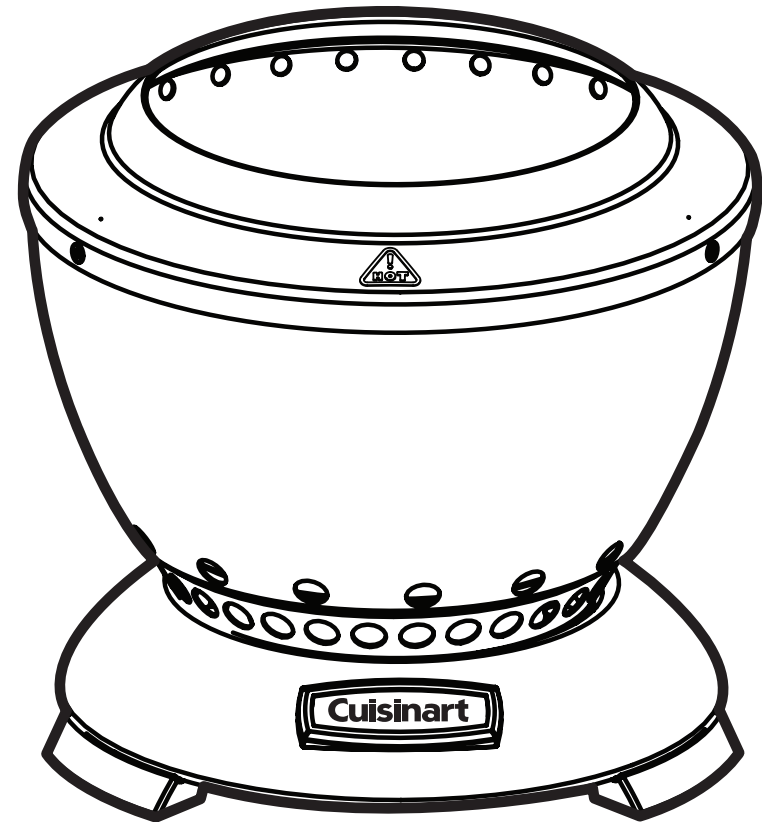


TABLE OF CONTENTS

Cover Page.....	1
Table of Contents.....	2
Safety Information.....	2
What's in the Box.....	4
Exploded View.....	5
Assembly Instructions.....	5
Operation.....	6
Care and Maintenance.....	7
Warranty and Replacement Parts.....	7

SAFETY INFORMATION

WARNINGS AND USAGE

IMPORTANT: ALL INSTRUCTIONS AND SAFEGUARDS ON THIS SECTION MUST BE FOLLOWED TO PREVENT DAMAGE AND/OR INJURY.

USE CAUTION AND COMMON SENSE WHEN USING YOUR OUTDOOR FIRE PIT. FAILURE TO ADHERE TO THE SAFETY WARNING AND GUIDELINES IN THE MANUAL COULD RESULT IN BODILY INJURY OR PROPERTY DAMAGE. SAVE THIS MANUAL FOR FUTURE REFERENCE.

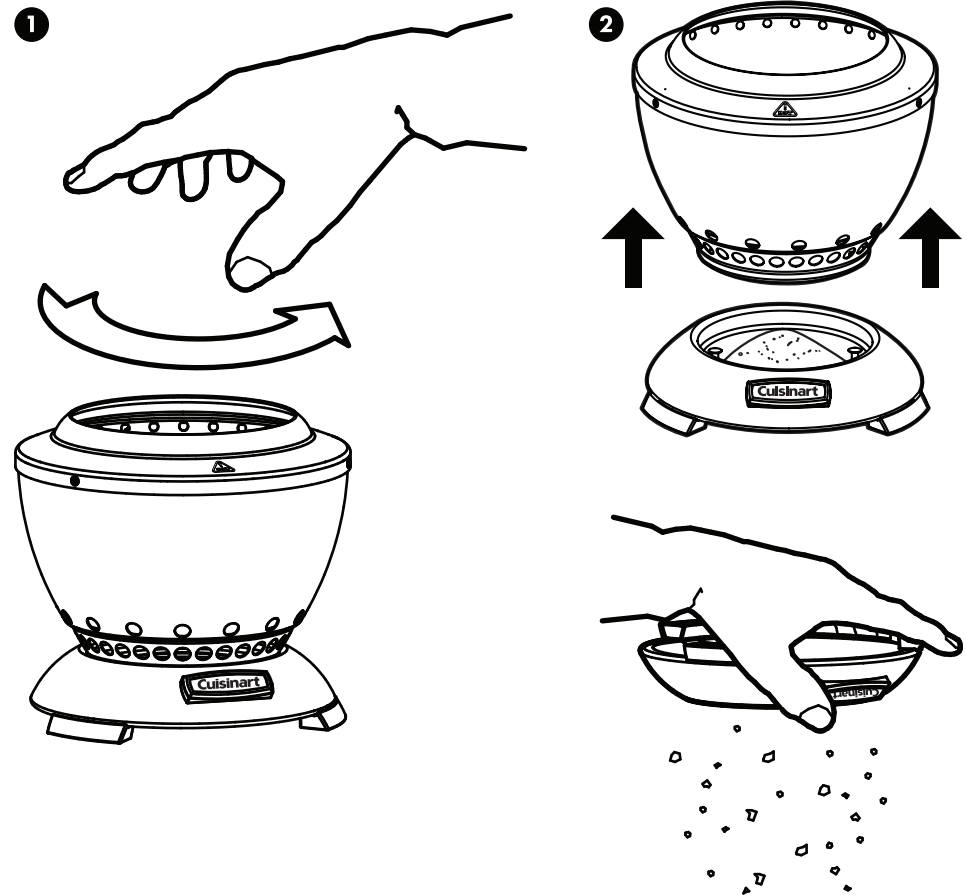
IMPORTANT SAFETY INFORMATION

⚠ WARNING:

- For outdoor use only.
- **Caution:** A wood-burning fire pit can be unpredictable in the wind. Use extreme care in windy conditions.
- Use only on level surfaces.
- The Cleanburn tabletop fire pit is for outdoor use only. It was designed as a tabletop fire pit, so it is a great feature for your outdoor tables. The integrated ash tray base has 3 raised legs to help provide space for cooling air flow under the base, and should be on a flat, stable surface when in use. The fire pit will burn extremely hot, and so it will have hot air gathering underneath, please be sure there are no heat sensitive materials underneath and just outside of the base area. Always keep the areas surrounding the fire pit base open and clear of cellphones, cups, glassware and such. Fire-Resistant surfaces are best. **NOTE: Do not leave the Cleanburn tabletop unattended when in use, especially when near combustible objects and even when it is cooling down.**
- Keep the outdoor tabletop fire pit a minimum of 3 ft. away from table guests, and any flammable items on the table.
- Keep the outdoor fire pit a minimum of 10 ft. away from buildings, structures, any flammable items such as patio table umbrella's, patio/deck awnings and vehicles.
- Do not allow children to touch or knock over the product.
- Never leave tabletop fire pit unattended, especially when children and/or pets are nearby.
- When wood is burned slowly, it produces tar and other organic vapors that combine with expelled moisture to form creosote. The creosote vapors condense on relatively cooler surfaces like the exhaust vents. As a result, creosote residue accumulates on these surfaces. When ignited, this creosote makes an extremely hot fire. To prevent this do a deep clean on the internal components of the fire pit at least twice a year.

REMOVING ASH

- Once the fire has extinguished and the unit has fully cooled, brush any remaining ash through the holes in the bottom plate of the main body so that it falls through and into the base.
- Remove the main body from base so that you can easily dispose of the ash from the base. To remove the main bowl from the base:
 1. Hold base still, and rotate the bowl in a "counter-clockwise" movement from the base.
 2. Lift bowl upwards to disconnect and tip base over to dispose of cold ashes.



CARE AND MAINTENANCE

- Clean out ashes after each use only after the fire pit is completely cooled. See "Removing Ash" Section above.
- Do not attempt to clean while hot.
- Store the fire pit in a dry place out of the weather.
- When not in-use store in the provided transport bag to protect the fire pit avoid moisture.

OPERATION

DUAL-FUEL



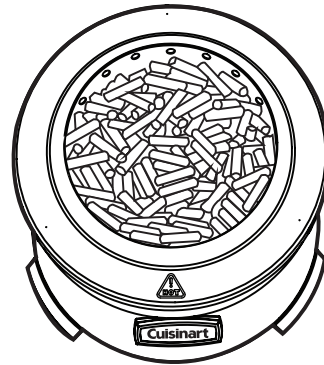
Burning wood pellets – (Fill-it & enjoy the experience)

This Cleanburn Tabletop fire pit once filled up with wood pellets offers a great experience for up to 45 minutes depending on the weather. Even with the flames dying down and not showing above the wind guard, the pellets inside are still burning and giving off warm BTUs of heat for some time after!

Directions:

1. Place the fire pit into the base on a level surface away from excess wind.
2. Add either heating style or food grade (smoking) pellets into the bowl, pour pellets in until about ½" below the top inner vent holes, and move pellets around and spread evenly inside. **Note: If pellets added are higher than the top inner vent holes this can cause the fire pit ventilation to be blocked and not provide optimal airflow to the pellets which can cause your fire to suffocate and give off excess smoke when trying to ignite.**
3. We recommend using fire starters to start your fire pit quickly and easily with pellets. Place (1) fire starter on top of the pellets in the center of the bowl. Push down half-way into the pellets so the firestarter is submerged and surrounded by pellets.
4. Using a butene torch or long matchstick, ignite the fire starter so the pellets begin to burn on their own. Now relax and enjoy.

Option: To extend your fire pit burn time, add up to 1/4 cup of pellets at a time along the inside edge of the bowl. Avoid placing them in the center to prevent choking the flames. Use a metal 1/4 measuring cup, preferably long-handled. Adding pellets too quickly reduces airflow and may extinguish the flames, requiring a restart.



Burning Mini Firewood (6" or less)

1. Place the fire pit into the base on a level surface away from excess wind.
2. First add two shorter length mini firewood into the bowl on each side of the chimney, add your crumple paper next or your fire starter on top of the center raised chimney. Note: Using fire starters will start your fire pit quickly and easily.
3. Now add two or three more mini firewood logs in a cross pattern on top.
4. Using a butene torch or long matchstick, ignite the paper or fire starter so the logs begin to burn. **Note: Do not place wood logs higher than the top inner vent holes as this can cause the needed ventilation holes to be blocked and will cause your fire to smoke. We recommend no higher than the top inner vent holes.**
5. Slowly add additional mini firewood logs into bowl and continue to add wood for as long as the fire is desired

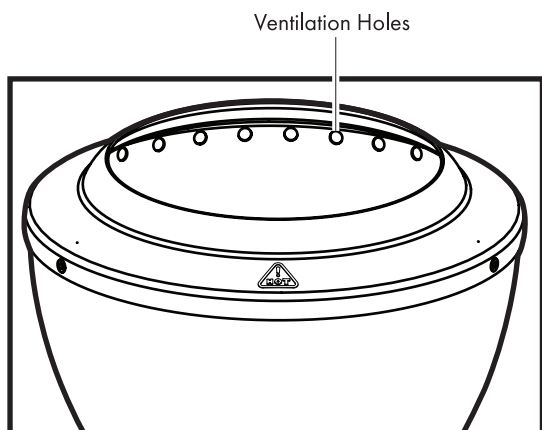


- Keep tabletop fire pit clean. When ash or creosote has accumulated, it should be cleaned to reduce risk of fire. See Care and Maintenance section.
- The surfaces of the tabletop fire pit will get very hot during regular use and can be a burn hazard. Do not leave unattended when children are present and keep away from combustible materials.
- To avoid accidental burns, wear heat resistant mitts, use long handled tools, handles, and knobs when operating the fire pit.
- **NEVER** use gasoline, gasoline-type lantern fuel, kerosene, charcoal lighter fluid, or similar liquids to start or "freshen up" a fire in this appliance. Keep all such liquids well away from the appliance when in use.
- Never attempt to touch or move the tabletop fire pit during use or before it has completely cooled down.
- After a period of storage, inspect the tabletop fire pit for abrasion, wear or damage.
- Before covering your tabletop fire pit, make sure it has cooled completely.
- Do not operate this tabletop fire pit while under the influence of drugs, alcohol, or while fatigued.
- Do not use this tabletop fire pit unless it is completely assembled, and all parts are securely fastened and tightened.
- Never use under low hanging tree branches, trellises or overhangs of any kind including covered porches.
- Always use fire pit in accordance with all applicable local, state, and national codes. Contact your local fire department for further guidance and details.
- When using the tabletop fire pit, exercise the same precautions you would with any open fire.
- Do not use fire pit until you have read the operating instructions and user warnings.
- Tabletop fire pit is designed for use with mini-wood firewood or wood pellets and may not function properly with other fuel sources.
- Do not store or use gasoline or any other flammable vapors or liquids in the vicinity of the fire pit.
- Do not store LP gas cylinders within 30 ft of tabletop fire pit while in use.
- Do not use fire pits near automobiles, trucks, vans, or recreational vehicles.
- Keep the area around the tabletop fire pit clear and free of any combustible materials, gasoline, or any other flammable liquids. Do not use tabletop fire pit in an explosive environment.
- Do not wear flammable or loose clothing when operating the tabletop fire pit.
- Do not remove any coals or ash or clean the fire pit until the coals and ash are completely extinguished and the unit has completely cooled.
- Do not lean or reach over tabletop fire pit when lighting or when in use.
- Avoid breathing smoke from the fire and avoid getting smoke in your eyes.
- Do not use water to extinguish the fire as it could cause damage to the fire pit as well as injury to the user.
- Serious injury, death, and/or property damage may occur if the above instructions are not followed exactly.

GENERAL WARNINGS






- Never use gasoline, alcohol or volatile fluids to start or restart fires.
- For longer product life, keep fires to a respectable size, do not overload.
- The tabletop outdoor fire pit is for adult use only.
- Before each use make sure the outdoor tabletop fire pit is in good working condition.
- Do not leave unattended at anytime during use.
- Do not use in windy conditions.
- Do not load the wood above the ventilation holes at the top of the fire bowl.
- Use caution when tending the fire, as surfaces will become very hot while in use.
- Use caution after the fire has been extinguished. Surfaces will remain hot for some time.
- The outdoor tabletop fire pit must be completely cooled off and all embers must be extinguished before any cover can be used.
- **CARBON MONOXIDE HAZARD!** Burning wood or charcoal produces carbon monoxide, which has no odor and can cause death if burned in enclosed areas. Never burn wood logs or wood pellets or charcoal inside homes.



WHAT'S IN THE BOX

COMPONENTS

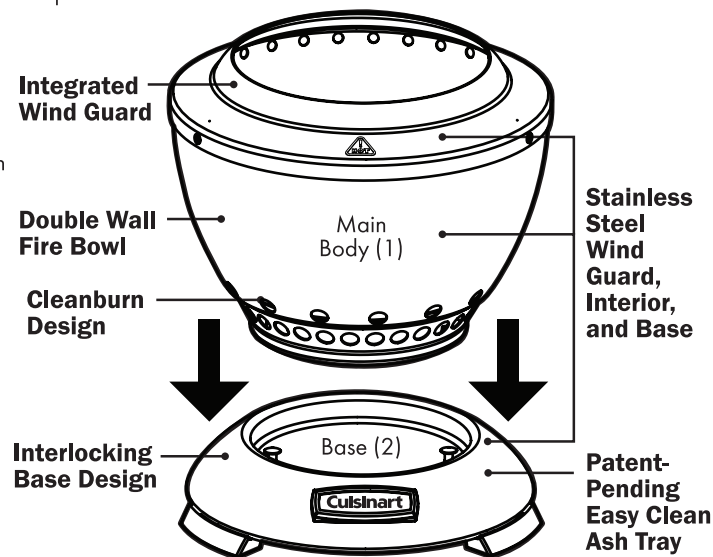
PART	DESCRIPTION		
1	Main Body		(x1)
2	Base		(x1)
3	Transport Carry Bag		(x1)

ASSEMBLY INSTRUCTIONS

Carefully remove all pieces from the carton and make sure that you have all parts listed (refer to components list). If you are missing parts, please contact 1-866-994-6390 for further assistance.

Use caution when removing the parts from packaging. It is recommended to wear gloves when assembling and handling loose parts.

1. Lower the Main Body (1) on top of the Base (2) and align the main body's two slotted holes at the bottom with the Base's 2-vertical pins and push bowl down into base.



2. Once down, then rotate "clock-wise" until it locks into place.

